

Thermal Test Report

Model : YY-W201

Thermal Performance Contest

Date:Oct.28 2004

THIS TEST REPORT IS PROVIDED "AS IS" WITH NO WARRANTY WHATSOEVER, WHETHER EXPRESS, IMPLIED OR STATUTORY, INCLUDING BUT NOT LIMITED TO THOSE FOR NON-INFRINGEMENT OF INTELLECTUAL PROPERTY, MERCHANTABILITY OR SATISFACTORY QUALITY, FITNESS FOR ANY PARTICULAR PURPOSE, OR ANY WARRANTY OTHERWISE ARISING OUT OF ANY PROPOSAL, SPECIFICATION OR SAMPLE.

YEONG YANG ASSUMES NO RESPONSIBILITY FOR ANY ERRORS WHICH MAY APPEAR IN THIS DOCUMENT

Table of Contents

1) Introduction.....	1
2) References.....	1
3) Thermal Test	1
1. Test Configuration.....	2
2. <u>Test Equipment Used.....</u>	<u>2</u>
3. Test Process	2
4. Data Recorded.....	2
5. Thermal Test Results.....	3
4) Summary/Recommendations	3
<u>Table 4.1 & 4.2 (Test Result & Sample Picture)</u>	

1. Introduction

The purpose of this evaluation is to find the best performance thermal solution by system operated as for Intel P4 3.4G processor .

2. References

ATX spec <http://formfactors.org>

3. Thermal Test

3.1 Test Configuration

Chassis	YY-W201
Power Supply	Delta GPS-350CN-100A,350W
Chassis Fan	Jamicon KF1225B1LS, Quantity:1 Speed:1600RPM (Low Speed) Jamicon KF1225B1MS, Quantity:1 Speed:1800RPM (Middle Speed) Jamicon KF1225B1HS, Quantity:1 Speed:2200RPM (High Speed) <i>System config. To be tested with various modes, please refer to table 4.1 & 4.2</i>
Processor	Intel P4 Prescott FMB 3.4GHz/800MHz 1MB L2-Cache LGA-775, Quantity:1
Processor Thermal solution	Intel Boxed Cooler
Motherboard	ASUS P5GD1-VM(intel 915P)
Memory	Kingston DDR400 512MB, Quantity: 2
Hard Drive	SEAGATE 40G, Quantity: 1
CD ROM	Cyber CD526D 52X, Quantity: 1
Floppy Drive	Mitsumi D359M3, Quantity: 1
AGP Card	GIGABYTE GA-V-NX53128T, Quantity: 1
PCI-Sound Card	D-LINK DFE-530TX, Quantity: 1
PCI-Sound Card	ESS SC1938, Quantity: 1

3.2 Test Equipment Used

FULL SYSTEM OPERATION

Fluke Hydra 2635A

Software: Intel P4 Prescott MAXPOWER Rev:1.4.2

3.3 Test Process

The peripherals listed in section 1 were installed in the chassis and thermocouples were attached at the points designated in section 4. The chassis was tested in a controlled temperature held at a constant 35°C. The thermal readings communicated from the sensors on the test board to the test software. The system was exercised until the initial thermal gradient reached a consistent level with a slope-nearing zero. During testing, the ambient temperature was monitored approximately 2" from the front bezel of the chassis.

3.4 Data Recorded

Temperature readings are measured at the following location(s):

- Ambient -- Hotbox ambient temperature (2" from the front center of the chassis)
- Tinlet1 – Internal ambient temperature of the processor heatsink .5" away from the center of fan hub (near the rear port)
- Tinlet2 – Internal ambient temperature of the processor heatsink .5" away from the center of fan hub (near the PSU)
- Tinlet3 – Internal ambient temperature of the processor heatsink .5" away from the center of fan hub (near the DIMM slot)
- Tinlet4 – Internal ambient temperature of the processor heatsink .5" away from the center of fan hub (near the chipset)
- Tcase -- Processor case temperature

4. Test Result (see table 4.1), & Test mode details (Table 4.2)

5. Summary: PASS

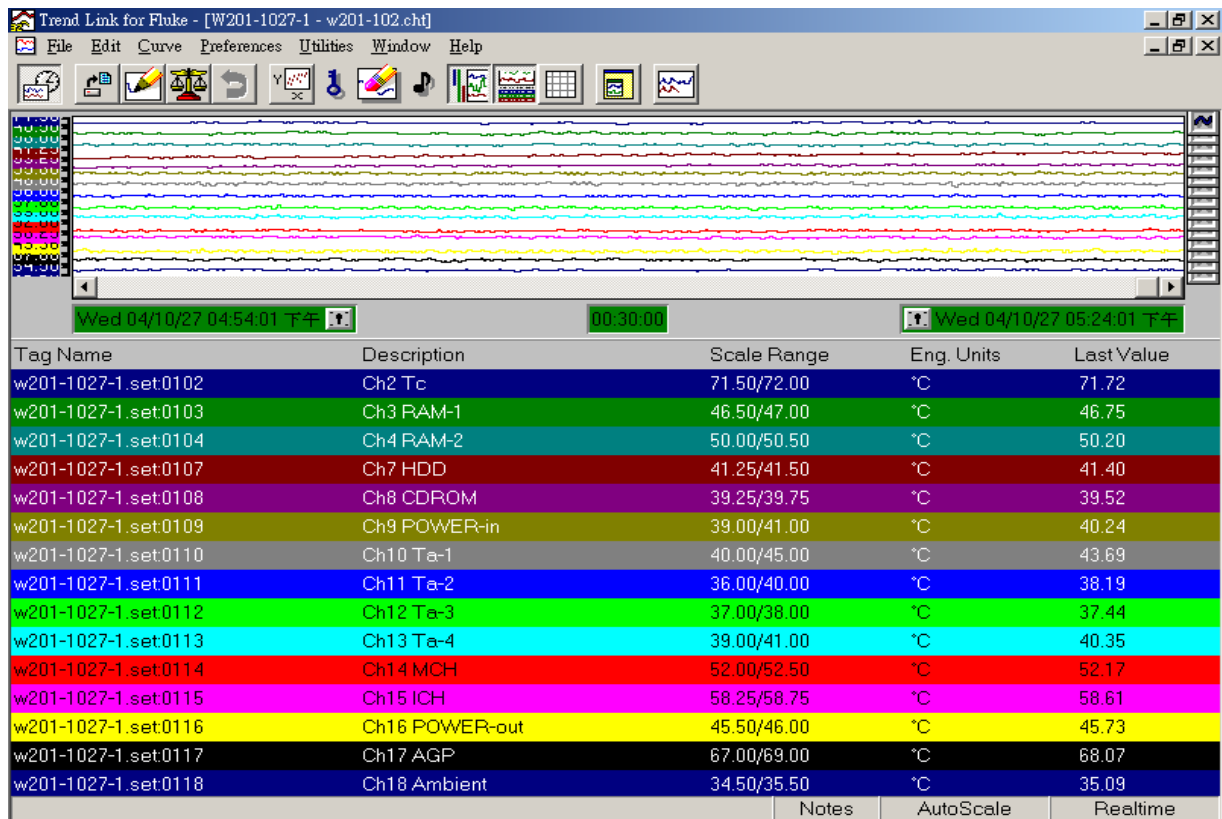
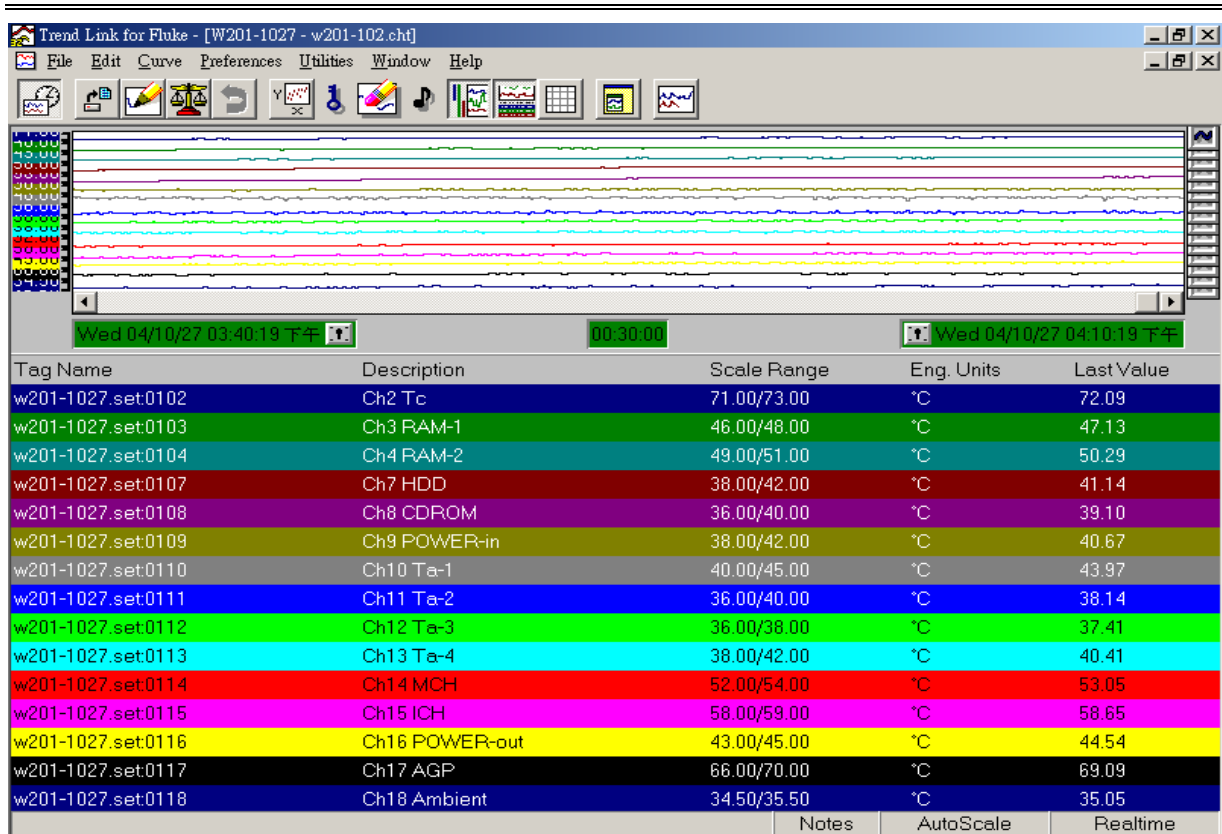
*According to the FMB guidance, the CPU is FMB04B, TDP=115W
Psc Tc= Px0.25+44.0 =72.75 °C (Tc spec).*

Yeong Yang Technology, Engineering Validation

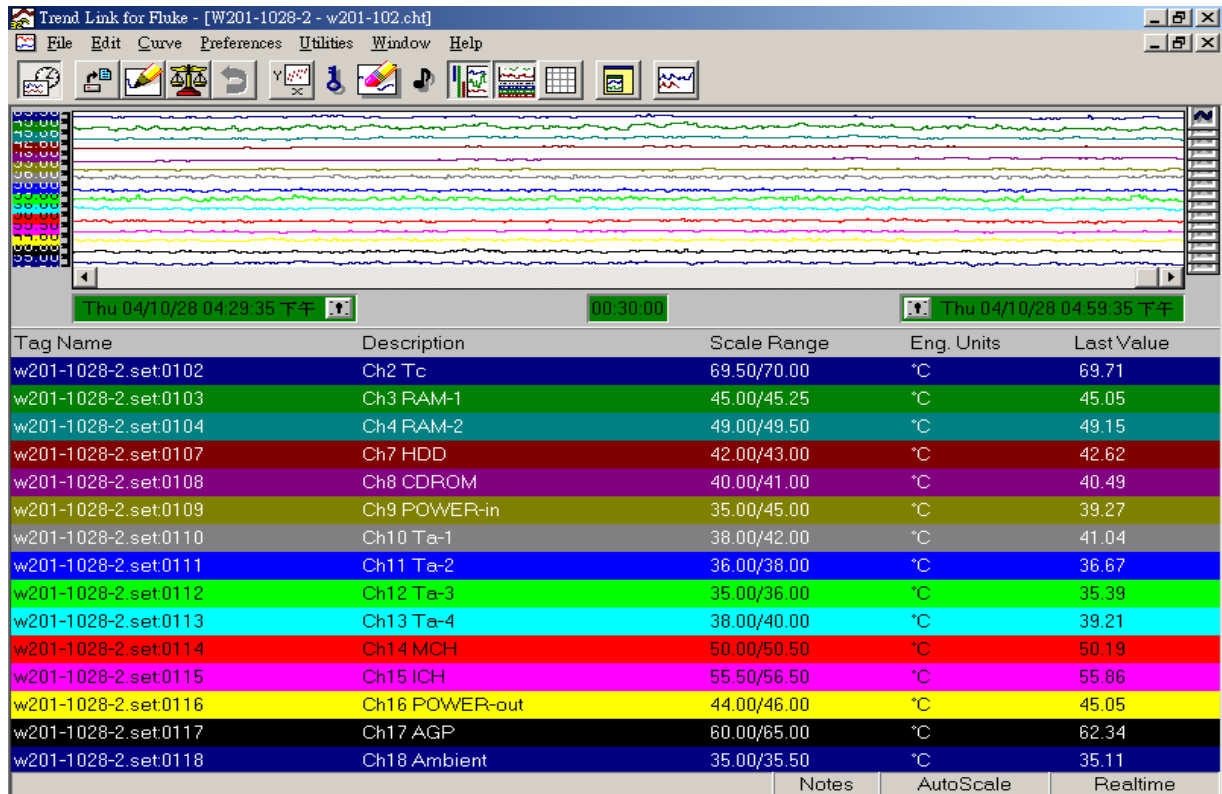
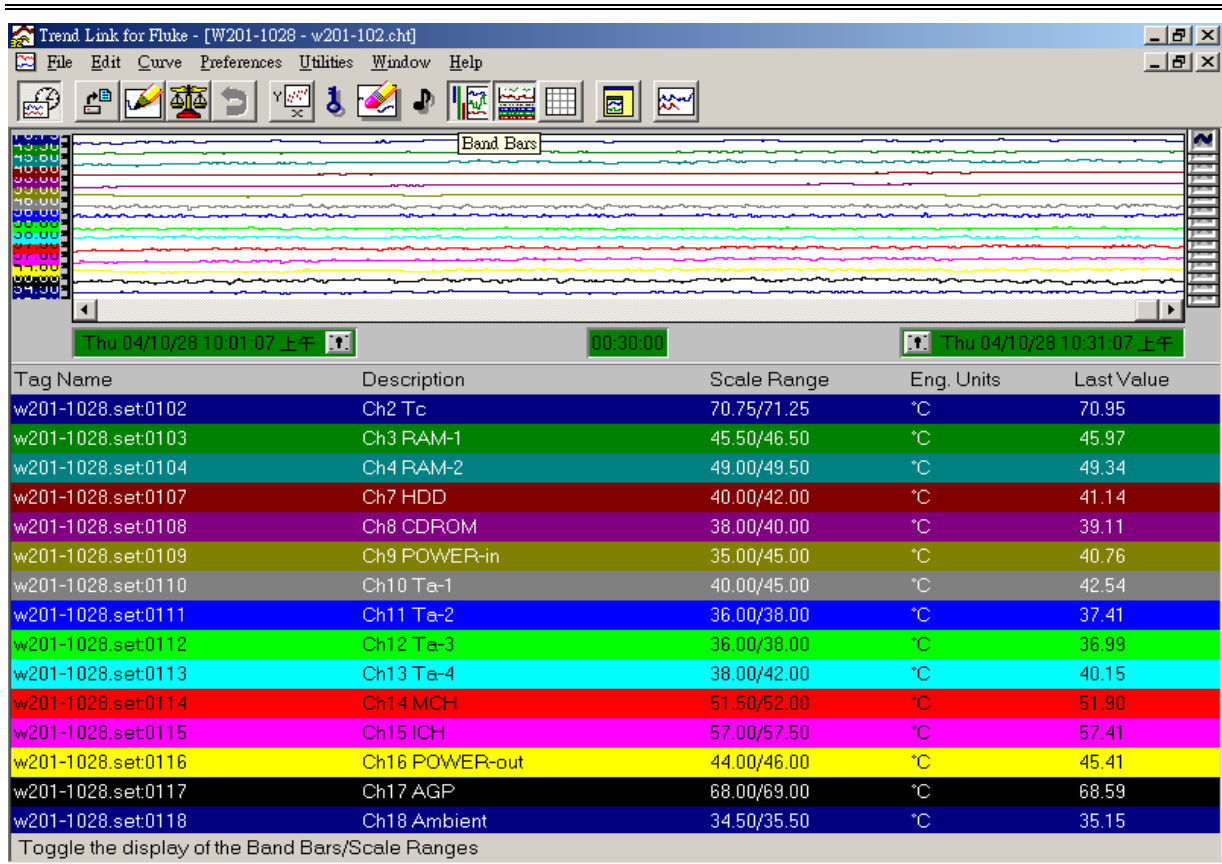
Table 4.1
Date: Oct.28.2004

position	Mode 1	Mode 2	Mode 3	Mode 4
Power model	Delta 350CN-100A (with 8cm Fan for airflow out, vents for air flow out)			
System Fan (Mounted in rear side of chassis)	Jamicon KF1225B1LS	Jamicon KF1225B1MS	Jamicon KF1225B1HS	Jamicon KF1225B1HS
Airguide (CAG1.1)	No	No	No	Yes
Run the test under the software on 100 % Level	100 %	100 %	100 %	100 %
Test Result (values was according to the screens of Fluke monitor)				
DIMM-1	47.1	46.8	46	45.1
DIMM-2	50.3	50.2	49.3	49.2
HDD	41.1	41.4	41.1	42.6
CD ROM	39.1	39.5	39.1	40.5
MCH	53.1	52.2	51.9	50.2
ICH	58.7	58.6	57.4	55.9
AGP	69.1	68.1	68.6	62.3
POWER-in	40.7	40.2	40.8	39.3
POWER-out	44.5	45.7	45.4	45.1
T-inlet 1	44	43.7	42.5	41
T-inlet 2	38.1	38.2	37.4	36.7
T-inlet 3	37.4	37.4	37	35.4
T-inlet 4	40.4	40.4	40.2	39.2
T-inlets average Tambient(1~4)	<u>40</u>	<u>39.9</u>	<u>39.3</u>	<u>38.1</u>
T-case	<u>72.1</u>	<u>71.7</u>	<u>71</u>	<u>69.7</u>
Ambient(case outside)	35.1	35.1	35.2	35.1

Yeong Yang Technology, Engineering Validation



Yeong Yang Technology, Engineering Validation



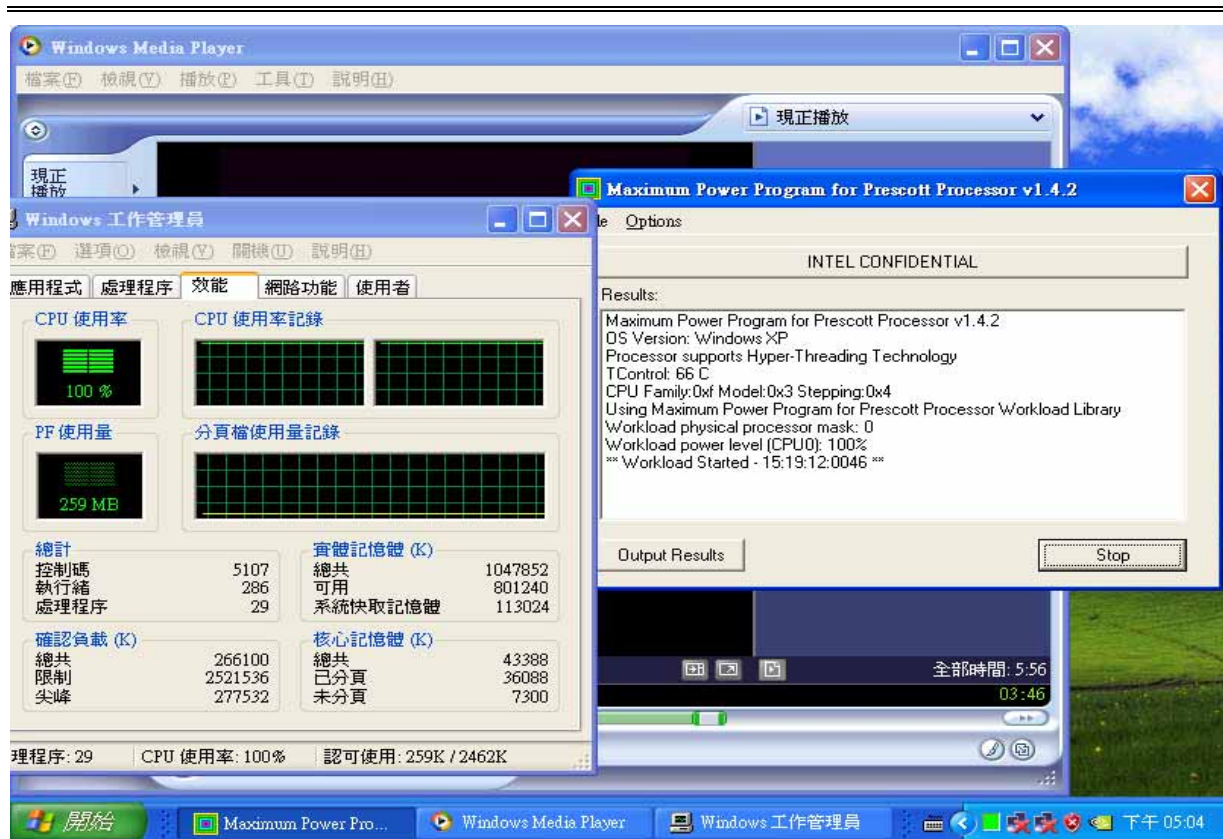


Table 4.2



The view of the chassis front side.



The view of the chassis right side.



The view of the chassis left side.



The view of the chassis back side.



The view of the thermocouples connections.



The view of CAG 1.1.