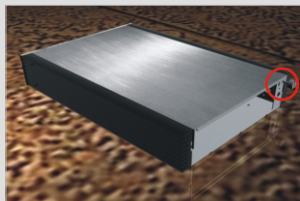


GS-L01 INSTALLATION QUICK GUIDE



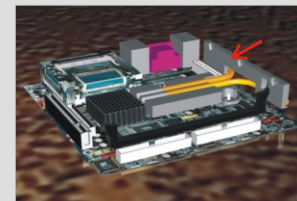
LOOSEN SCREW



OPEN THE TOP COVER



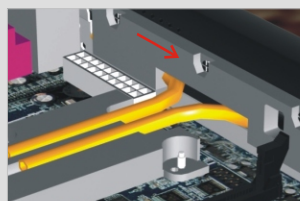
REMOVE DVD/HDD RACK



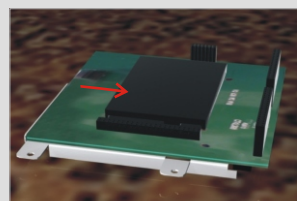
INSTALL HEATPIPE ONTO MOTHERBOARD



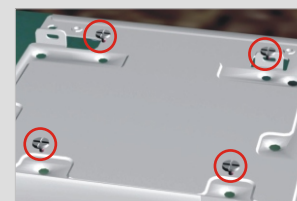
INSTALL AND FIX MOTHERBOARD



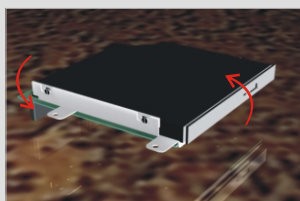
FIX UP THE HEATPIPE



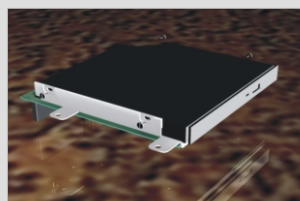
INSTALL 2.5" HDD ONTO DVD/HDD RACK



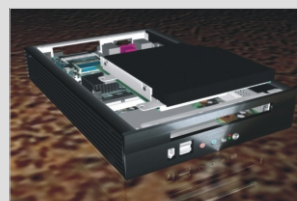
FIX 2.5" HDD ON THE RACK FROM REVERSE SIDE



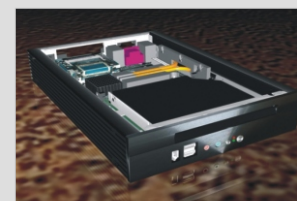
REVERSE DVD/HDD RACK



INSTALL DVD ONTO RACK



INSTALL DVD/HDD RACK MOUDULE ONTO CHASSIS



FIX UP THE RACK MODULE



INSTALL TOP COVER



SCREW BACK COVER